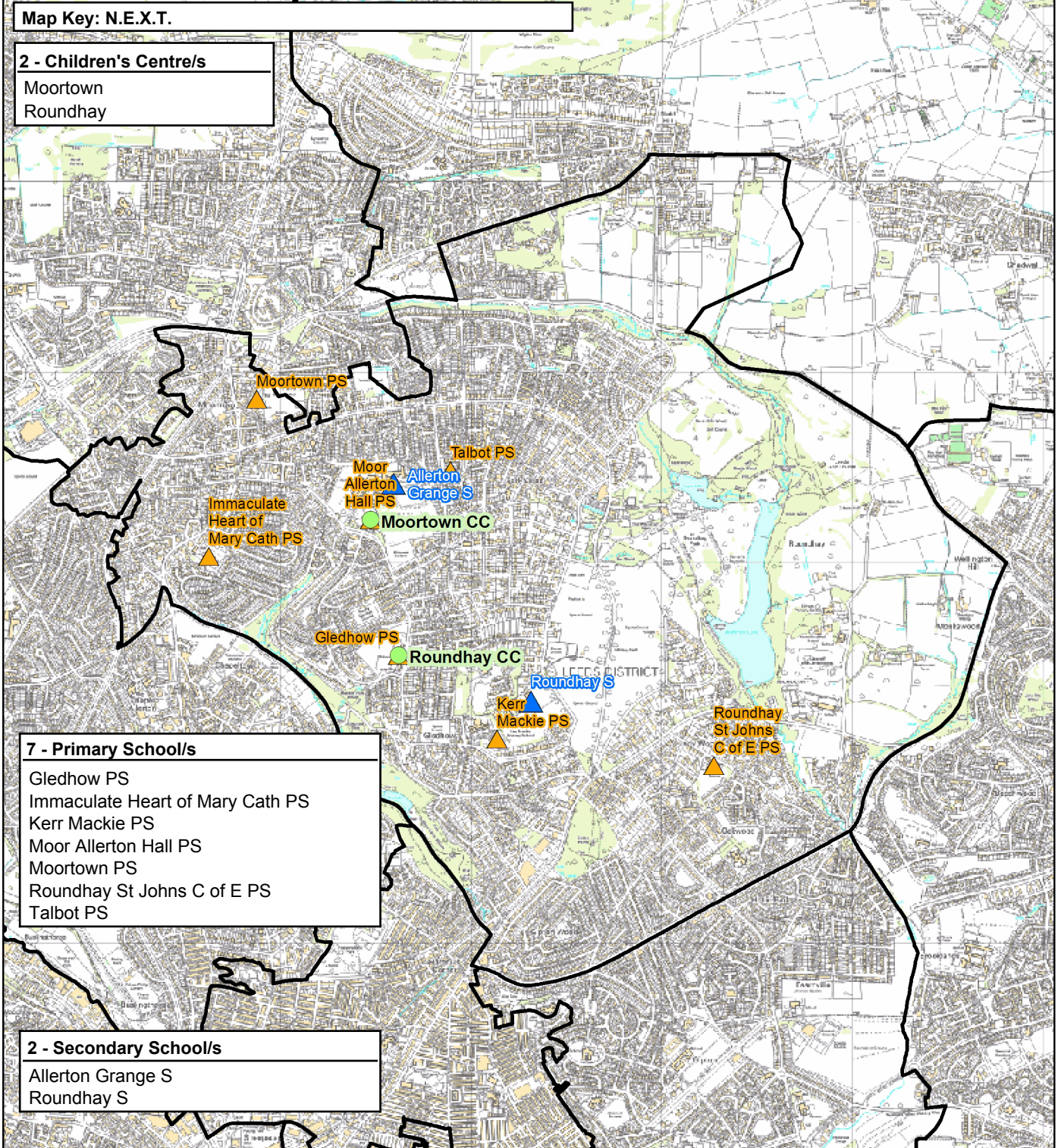
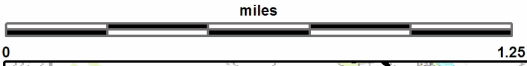
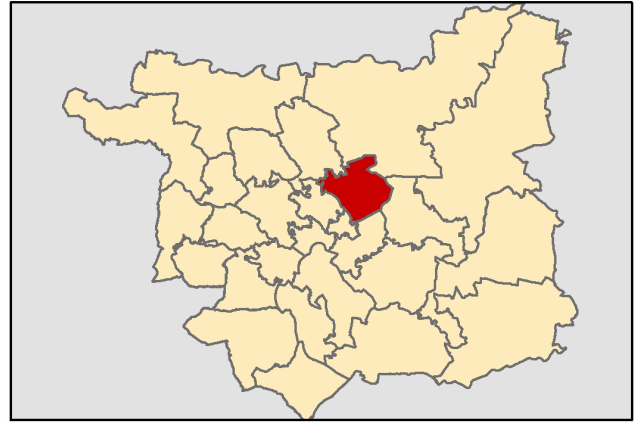


This report was produced by the Children's Performance Service on 01/06/2012. The information in these overviews are based on the cluster data profile version 5.12.

For more information telephone 0113 39 50701 or email [educ.pmi@leeds.gov.uk](mailto:educ.pmi@leeds.gov.uk) or visit:

[www.leedsinitiative.org/ClusterDataProfile.aspx](http://www.leedsinitiative.org/ClusterDataProfile.aspx)

The map to the right gives the position of the cluster in Leeds. The map below shows the location of the Children's Centres, Primary and Secondary Schools in the cluster.



**Cluster Overviews key****Data Period:**

The codes in the key to the right are for the time periods that the data in these reports cover. They will appear next to all data sets.

Academic Year  
Calendar Year  
Financial Year  
Snapshot  
Other

**DP:A**  
**DP:C**  
**DP:F**  
**DP:S**  
**DP:O**

**Cluster Overview**

Data Source: January School Census					DP: S
Primary Schools	DFE	Total Number on roll			
		2010	2011	2012	
Gledhow Primary School	2428	494	495	501	
Immaculate Heart of Mary Catholic PS	3381	399	407	403	
Kerr Mackie Primary School	2434	478	463	466	
Moor Allerton Hall Primary School	2439	347	344	377	
Moortown Primary School	2440	201	200	199	
Roundhay St Johns C of E Primary School	3329	258	259	262	
Talbot Primary School	2432	498	490	500	
<b>Total</b>		<b>2675</b>	<b>2658</b>	<b>2708</b>	

Data Source: January School Census					DP: S
Secondary Schools	DFE	Total Number on roll			
		2010	2011	2012	
Allerton Grange School	4040	1564	1513	1432	
Roundhay School	4063	1541	1580	1624	
<b>Total</b>		<b>3105</b>	<b>3093</b>	<b>3056</b>	

Data Source: Children's Services - Feb 2012		DP: S
Children's Centre reach area registration for families of children aged 0-5	% Registered	
Cluster	44.46	
Wedge	59.28	
Leeds all	60.23	

Data Source: Children's Services	
Children's Centre	Ofsted ID
Moortown	
Roundhay	

Data Source: The office of National Statistics population mid-year estimates										DP: S
Population Estimates	0-15			Working Age			60/65+			
	2008	2009	2010	2008	2009	2010	2008	2009	2010	
Cluster	6643	6708	6813	23357	23608	23877	6152	6199	6228	
Wedge	40736	40931	41233	132341	133770	135300	37146	37313	37640	
Leeds all	132741	133396	134493	516578	522769	531036	129937	131536	133240	

Data Source: NHS Leeds													DP: S
Under Fives	September 2010						September 2011						
	0-1	1-2	2-3	3-4	4-5	Total	0-1	1-2	2-3	3-4	4-5	Total	
Cluster	438	486	450	468	470	2312	497	461	486	457	483	2384	
Wedge	3177	3061	3042	2929	2892	15101	3041	3163	3021	2987	2942	15154	
Leeds all	10202	9848	9478	9195	9113	47836	9996	10173	9787	9438	9319	48713	

Data Source: January School Census												DP: S
Percentage of pupils who are:	Black and Minority Ethnic			English as an Additional Language			Free School Meal Eligible			Special Education Needs		
	2010	2011	2012	2010	2011	2012	2010	2011	2012	2010	2011	2012
<b>Primary</b>												
Cluster school	48.1	48.4	48.6	26.6	26.6	25.7	8.3	8.6	8.8	12.4	12.6	12.9
Cluster residence	46.7	47.7	48.1	29.1	29.0	28.2	8.4	8.8	9.1	12.6	13.4	13.3
Wedge school	41.6	42.9	44.0	27.2	28.2	28.9	25.0	25.2	24.7	19.5	19.9	18.5
Total primary	23.6	24.8	26.4	15.8	16.5	17.1	21.5	22.2	22.0	17.8	17.8	17.4
<b>Secondary</b>												
Cluster school	59.2	62.8	64.2	22.8	11.1	14.6	16.9	16.5	16.0	28.7	30.8	26.3
Cluster residence	44.5	46.0	48.0	18.6	15.8	17.3	10.1	9.5	9.4	21.4	21.3	18.9
Wedge school	37.5	39.2	41.1	19.5	17.3	19.8	23.2	23.9	24.2	23.9	25.6	22.1
Total secondary	18.6	19.4	20.4	10.4	10.0	11.1	19.0	19.4	19.5	21.4	20.4	19.0
<b>Leeds all</b>	<b>21.4</b>	<b>22.5</b>	<b>23.9</b>	<b>13.4</b>	<b>13.7</b>	<b>14.6</b>	<b>20.6</b>	<b>21.1</b>	<b>21.1</b>	<b>20.0</b>	<b>19.6</b>	<b>18.7</b>

Data Source: HM Revenue and Customs - taken on 31st August 2007-2009										DP: S
Child Poverty	Number of children (under 16) in families in receipt of CTC or IS/JSA			Number of children (all ages) in families in receipt of CTC or IS/JSA			Number of children in poverty, by age of youngest child, 2009			
	2007	2008	2009	2007	2008	2009	0-4	5-10	11-15	16-19
Cluster	770	725	695	930	880	855	330	280	190	55
Wedge	11340	10850	10970	12700	12220	12500	6540	3560	1850	550
Leeds all	30235	29700	31030	33690	33300	34965	18720	9640	5115	1490

Data Source: Children's Services - Summer Term 2011					DP: S
Nursery Education Grant Claims	Number of eligible children	Number of:			
		Claims by childcare setting	Resident Claims	Non Resident Claims	
Cluster	731	593	403	190	
Leeds all	14500	13851	9704	4148	

Data Source: January School Census and 2010 Index of Multiple Deprivation										DP: S
IMD % of pupils resident in most deprived areas	3% most deprived			10% most deprived			20% most deprived			
	10	11	12	10	11	12	10	11	12	
<b>Primary</b>										
Cluster school	3.8	2.9	2.6	14.2	14.0	13.8	18.6	18.7	18.1	
Cluster residence	0.0	0.0	0.0	3.9	3.4	4.1	3.9	3.4	4.1	
Wedge school	16.7	15.3	15.5	44.8	43.2	43.4	53.3	53.2	53.8	
Total primary	8.2	8.4	8.3	28.1	27.1	27.3	36.6	37.6	38.0	
<b>Secondary</b>										
Cluster school	13.0	10.4	10.2	30.9	31.3	30.7	40.0	40.8	40.7	
Cluster residence	0.0	0.0	0.0	3.9	3.8	3.4	3.9	3.8	3.4	
Wedge school	14.2	13.8	14.4	39.1	38.8	39.4	49.4	49.9	50.4	
Total secondary	7.0	7.5	7.6	24.0	23.5	23.8	32.3	33.5	33.6	
<b>Leeds all</b>	<b>7.7</b>	<b>8.0</b>	<b>8.0</b>	<b>26.4</b>	<b>25.7</b>	<b>25.9</b>	<b>34.8</b>	<b>35.9</b>	<b>36.2</b>	

Data Source: January School Census and CACI ACORN											DP: S
KEY: Wealthier Achievers(WA), Urban Prosperity (UP), Comfortably Off (CO), Moderate Means (MM), Hard Pressed (HP)											
Percentage of pupils in each ACORN category	2011					2012					
	WA	UP	CO	MM	HP	WA	UP	CO	MM	HP	
<b>Primary</b>											
Cluster school	33.8	18.1	31.0	6.1	10.2	32.9	19.0	31.6	5.5	10.3	
Cluster residence	37.2	16.5	38.2	2.4	5.3	35.5	16.6	38.8	2.5	6.1	
Wedge school	19.9	9.4	19.5	16.8	33.6	19.4	9.2	19.7	16.7	34.1	
Total primary	15.4	5.9	27.8	15.8	34.3	15.0	6.0	27.7	15.9	34.6	
<b>Secondary</b>											
Cluster school	21.8	16.3	25.9	20.3	15.0	22.2	16.8	25.5	20.3	14.8	
Cluster residence	37.1	14.4	39.0	2.2	7.0	36.8	14.5	38.9	2.5	6.9	
Wedge school	19.0	8.5	21.3	16.2	34.2	18.7	8.8	21.2	16.0	34.7	
Total secondary	17.1	5.2	29.7	14.7	32.5	16.9	5.3	29.8	14.7	32.6	
<b>Leeds all</b>	<b>16.1</b>	<b>5.6</b>	<b>28.5</b>	<b>15.4</b>	<b>33.6</b>	<b>15.8</b>	<b>5.7</b>	<b>28.5</b>	<b>15.4</b>	<b>33.8</b>	

Data Source: DWP information Directorate													DP: F
KEY: Job Seekers Allowance (JSA), Incapacity Benefit (IB), Lone Parent Benefit (LPB), Total Out of Work (TOW)													
Unemployment Percentage of working age people in receipt of:	2009				2010				2011				
	JSA	IB	LPB	TOW	JSA	IB	LPB	TOW	JSA	IB	LPB	TOW	
Cluster	2.9	4.1	0.7	8.0	2.8	4.1	0.6	7.9	2.7	4.1	0.6	7.6	
Wedge	5.2	6.8	2.5	15.0	5.2	6.8	2.2	14.8	5.2	6.8	2.0	14.6	
Leeds all	4.4	5.9	1.8	12.6	4.3	5.8	1.7	12.3	4.2	5.8	1.5	12.1	

Data Source: AXCIOM Lifestyle Survey 2009-2011													DP: S					
	Property type by %									Length of residence by %								
	Owned			Rented - Council			Rented - Private			Less than 1 year			2-5 years			More than 5 years		
	09	10	11	09	10	11	09	10	11	09	10	11	09	10	11	09	10	11
Cluster	76.3	76.6	12.1	8.9	9.0	154.7	14.8	14.3	0.0	6.1	3.4	4.2	16.7	19.2	14.6	77.2	77.4	81.2
Wedge	58.9	59.1	44.4	25.7	25.8	58.7	15.4	15.2	0.0	5.8	7.1	4.4	19.0	18.0	17.6	75.2	74.9	78.1
Leeds all	61.5	61.6	39.0	24.0	23.9	61.2	14.5	14.6	0.0	7.9	8.1	5.1	20.3	20.0	18.5	71.9	71.9	76.4
Income by %	<10k			10-20k			20-30k			30-40k			40-50k			50k+		
	09	10	11	09	10	11	09	10	11	09	10	11	09	10	11	09	10	11
Cluster	13	13	14	21	16	18	15	11	18	14	17	19	18	19	16	18	23	15
Wedge	19	20	17	21	20	25	15	13	15	15	17	17	16	15	13	15	15	13
Leeds all	20	18	18	21	20	23	16	15	16	15	18	17	14	13	13	14	16	14
Struggling with payments by %	Food									Bills			Mortgage					
				09	10	11				09	10	11						
Cluster				10.3	9.9	4.1				8.9	10.1	4.4				1.9	2.4	1.8
Wedge				15.1	11.7	6.6				17.8	15.0	9.2				2.3	2.0	1.6
Leeds all				15.9	10.8	6.4				16.3	13.0	8.3				2.2	2.2	1.7

## Being Healthy

Data Source: NHS Leeds										DP: Various - Listed with each report								
Birth Data	3 year rolling average of births below 2.5kg						Number and rate of conceptions per 1000 15-17 year olds											
	% low birth weight babies						DP: O				Number				Rate			
	2006-08		2007-09		2008-10		June to May		2008-09		2009-10		2008-09		2009-10			
Cluster	7.0		7.6		8.0		Cluster		23		25		17		19			
Wedge	8.8		8.6		8.5		Wedge		368		331		44		40			
Leeds all	7.8		7.8		7.6		Leeds all		1220		1145		45		43			
DP: C	% of women receiving a health and social care needs assessment at 12 weeks as a percentage of live births in the same year						DP: F				% Initiating breastfeeding April to March				% breastfeeding at 6 weeks April to March			
	2009		2010		2011		2009-10		2010-11		2009-10		2010-11		2009-10		2010-11	
Cluster	83.8		86.9		84.0		82.3		82.7		59.4		58.2					
Wedge	78.6		80.0		81.3		71.6		68.0		44.7		43.9					
Leeds all	81.6		82.9		84.0		67.6		65.1		40.4		39.3					
DP: C	Number of emergency admissions by age group 2007-11						Number of emergency admissions to hospital for injury, poisoning and certain other consequences of external causes by age group											
	0-4		5-10		11-18		0-4		5-10		11-18							
Cluster	1219		438		738		128		97		226							
Wedge	9631		2721		5612		1033		791		2006							
Leeds all	29793		8247		18194		3419		2522		6711							
Immunisation Data	% of 2 year olds receiving vaccinations in quarter 3 for:						% of 5 year olds receiving vaccinations in quarter 3 for:											
	Diphtheria			MMR			Diphtheria			MMR								
	09-10	10-11	11-12	09-10	10-11	11-12	09-10	10-11	11-12	09-10	10-11	11-12						
Cluster	97	98	96	93	90	93	96	91	96	89	91	94						
Wedge	95	96	96	87	87	93	93	92	95	89	91	94						
Leeds all	96	96	97	86	88	94	95	94	96	91	91	95						

Data Source: National Child Measurement Programme												DP: A		
Obesity	Obesity in Reception						Obesity in Year 6							
	% Obese			% Obese or overweight			% Obese			% Obese or overweight				
	08-09	09-10	10-11	08-09	09-10	10-11	08-09	09-10	10-11	08-09	09-10	10-11		
Cluster	7.3	9.0	8.3	18.5	20.9	20.0	19.5	21.9	17.6	34.1	35.5	31.3		
Wedge	9.7	10.4	10.1	21.4	23.3	23.2	20.3	22.1	20.5	33.9	36.6	35.2		
Leeds all	9.4	10.2	9.7	21.7	23.7	23.4	20.3	20.7	20.0	34.3	35.1	34.3		
Obesity	Obesity in Reception						Obesity in Year 6							
	3 year average 2008-2011						3 year average 2008-2011							
	% Obese			% Obese or overweight			% Obese			% Obese or overweight				
Cluster	8.21			19.82			19.64			33.66				
Wedge	10.07			22.68			20.89			35.18				
Leeds all	9.77			22.96			20.32			34.56				

## Stay Safe

Data Source: Children's Services					DP: Various - Listed with each report							
Number of LAC and Child protection plans	The number of children and young people looked after by the Local Authority - March based on home address before coming into care				The number of children with child protection plans - March				DP: S			
	2011		2012		2012		2011			2012		
	Cluster	12	15	54	24	SUPP						
Wedge	0	474	315	0	246							
Leeds all	1439	1454	1454	947	1019							
Number of Common Assessments (CAFs)					Social Care			Social Care Referrals		Requests for Service		
DP: C	2008	2009	2010	2011	DP:A	2009	2010	2011	DP:S	Feb 11 - Jan 12		
Cluster	8	13	34	32	Cluster	244	249	250		573		
Wedge	143	307	344	268	Wedge	3823	4170	4103		8634		
Leeds all	457	849	1115	892	Leeds all	14248	13784	14000		30539		
Number of Child and Adolescent Mental Health Services referrals												
DP: S	aged 11 and under				aged 12-18				total referrals			
September-October	2009-10		2010-11		2009-10		2010-11		2009-10		2010-11	
Cluster	46		40		66		58		112		98	
Wedge	471		250		686		429		1157		679	
Leeds all	1767		1124		2976		1730		4743		2854	

## Make a positive Contribution

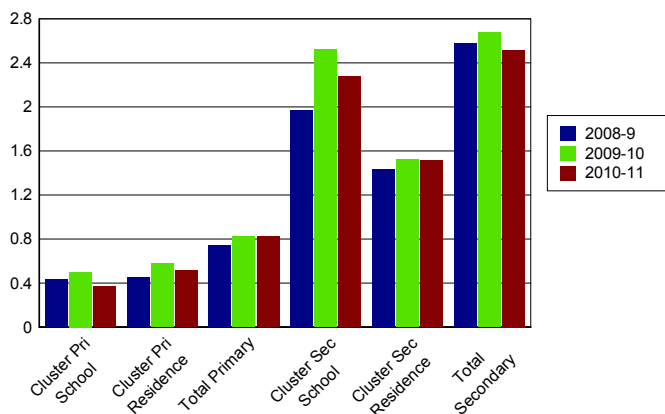
Data Source: West Yorkshire Police										DP: C
Property Crime Number of recorded crimes for:	Burglary dwelling		Burglary elsewhere		Criminal damage		Robbery		Vehicle crime	
	10	11	10	11	10	11	10	11	10	11
Cluster	448	384	176	188	352	211	51	62	435	467
Wedge	2789	2404	1062	1234	3572	2902	370	323	2368	1919
Leeds all	9508	8487	5681	5408	13599	10426	1297	1226	9168	7971
Personal Crime Number of recorded crimes for:					Drug Offences		Theft from person		Violent crime	
					10	11	10	11	10	11
Cluster					19	73	39	26	200	189
Wedge					378	915	405	298	2375	2556
Leeds all					1248	3192	2235	3034	11233	10896
Domestic Violence Incidents	Number of incidents recorded with a domestic qualifier or disposition code on the Storm WYP incident recording system - 2011									
Cluster	309									
Wedge	4116									
Leeds all	14525									

Data Source: Youth Offending Service									DP: A
Youth Offending	Number of Offenders					Number of Offences			
	07-08	08-09	09-10	10-11	07-08	08-09	09-10	10-11	
Cluster	60	33	35	39	119	74	73	73	
Wedge	780	515	405	439	1899	1454	901	883	
Leeds all	2741	2166	1522	1511	6331	4883	3134	3150	
April 2010 - March 2011 Number of offences by young offenders									
	Burglary	Breaches	Criminal Damage	Drugs Offences	Motoring and Vehicle	Other	Public Order	Theft and handling	Violence against the person
Cluster	7	SUPP	13	SUPP	10	10	7	10	13
Wedge	69	85	99	66	77	108	95	125	159
Leeds all	291	270	328	204	218	358	282	612	587

Data Source: School Census												DP: A
Attendance and persistent absence by percentage	Attendance			Authorised Absence			Unauthorised Absence			Persistent Absence 15%		
	08-09	09-10	10-11	08-09	09-10	10-11	08-09	09-10	10-11	08-09	09-10	10-11
<b>Primary</b>												
Cluster school	95	95	96	4	4	4	0.4	0.5	0.4	3.5	3.4	1.5
Cluster residence	95	95	96	4	4	4	0.5	0.6	0.5	3.9	4.3	2.0
Total primary	94	94	95	5	5	4	0.7	0.8	0.8	5.9	5.5	4.3
<b>Secondary</b>												
Cluster school	93	93	94	5	4	4	2.0	2.5	2.3	7.8	8.2	7.1
Cluster residence	94	94	94	5	4	4	1.4	1.5	1.5	5.8	6.1	5.4
Total secondary	92	92	92	6	6	5	2.6	2.7	2.5	13.0	13.1	11.2

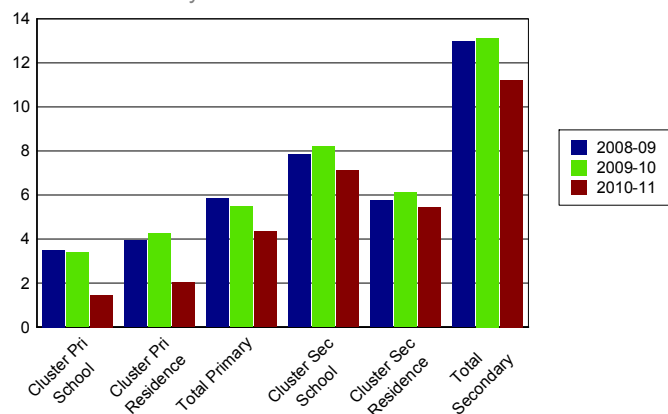
**% Unauthorised Absence**

2008-2011



**% Persistent Absence**

by 15% measure 2008-2011



Data Source: Children's Services												DP: A
Exclusions	Fixed Term Exclusions						Permanent Exclusions					
	Number			Rate per thousand			Number			Rate per thousand		
Primary	08-09	09-10	10-11	08-09	09-10	10-11	08-09	09-10	10-11	08-09	09-10	10-11
Cluster school	10	11	8	3.7	4.1	3.0	0	1	1	0.0	0.4	0.4
Cluster residence	12	9	10	3.6	2.7	3.0	0	1	1	0.0	0.3	0.3
Total primary	467	371	455	7.7	6.0	7.3	2	2	2	0.0	0.0	0.0
<b>Secondary</b>												
Cluster school	225	113	98	71.0	36.4	31.7	1	0	0	0.3	0.0	0.0
Cluster residence	82	68	76	45.8	37.2	41.9	1	1	3	0.6	0.5	1.7
Total secondary	4350	4286	3806	93.6	93.1	83.2	52	57	44	1.1	1.2	1.0

## Enjoy and Achieve

Data Source: Keyphas and DFE performance tables

DP: A

**Foundation Stage Profile Data** The percentage of pupils achieving a good level of development (78+ points overall and 6+ points in all PSE and CCL strands)

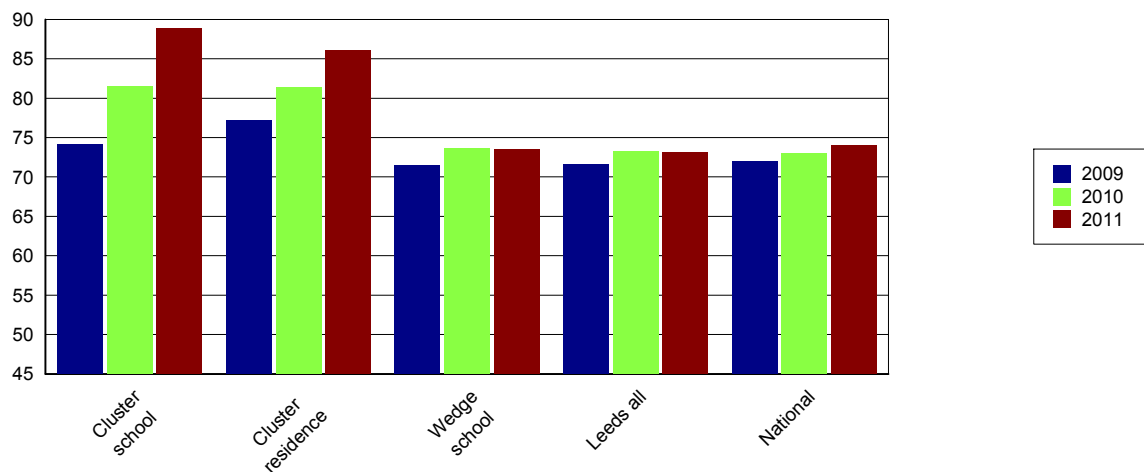
	2008	2009	2010	2011
Cluster school	47	58	52	58
Cluster residence	48	59	55	61
Leeds all	47	51	53	58

KS2 Data DP: A	English 4+			English 5+			Maths 4+			Maths 5+			English & Maths 4+		
	09	10	11	09	10	11	09	10	11	09	10	11	09	10	11
Cluster school	79	87	92	37	43	47	80	85	92	44	40	47	74	81	89
Cluster residence	83	86	91	40	42	41	82	84	90	44	41	43	77	81	86
Wedge school	78	78	80	31	31	30	78	79	78	35	32	33	71	74	74
Leeds all	79	79	81	28	31	32	77	79	78	33	31	32	72	73	73
National	80	80	82	29	33	29	79	79	80	35	34	35	72	73	74

KS2 Data - Expected progress	Made 2 levels of progress in English		Made 2 levels of progress in Maths	
	Number of pupils	Percentage	Number of pupils	Percentage
Cluster school	312	96.0	311	95.7
Wedge school	1865	90.5	1804	87.2
Leeds all	6334	88.6	6087	85.0
National		84.0		83.0

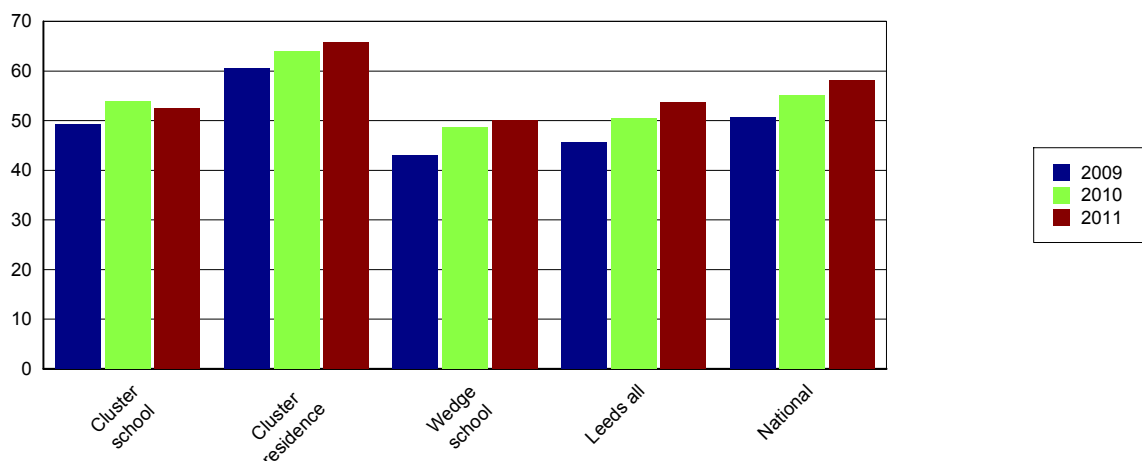
### Percentage of English and Maths

Level 4+



Data Source: EPAS and DFE performance tables											DP: A		
The results are for GCSE & equivalent qualifications. The calculation of achieving no qualifications includes all qualifications													
KS4 Data	% of 5+ A*-C			% of 5+ A*-C inc Eng & Maths			% English Baccalaureate	% of 5+ A*-G			% achieving no qualifications		
	09	10	11	09	10	11		09	10	11	09	10	11
Cluster school	67	77	87	49	54	52	18	91	96	96	2	1	0
Cluster residence	78	85	90	61	64	66	27	94	97	99	1	1	0
Wedge school	67	78	84	43	49	50	12	92	96	96	2	1	0
Leeds all	67	76	82	46	51	54	13	91	94	94	2	2	1
National	70	76	81	51	55	58	15	94	95	95		1	1

### Percentage 5 A\*-C Including English and Maths



## Achieve Economic Well Being

Key: Not in Employment, Education or Training (NEET), In Employment, Education or Training (EET), in Full time Education (FE)													
Data Source: November destination survey													DP: S
NEET/FE		Number of NEET			% NEET			Number of FE			% FE		
		2009	2010	2011	2009	2010	2011	2009	2010	2011	2009	2010	2011
Cluster school	Year 11	29	16	16	5	3	3	465	499	498	87	92	92
	Year 12	5	SUPP	7	2	SUPP	2	284	293	337	95	96	96
	Year 13	SUPP	SUPP	SUPP	SUPP	SUPP	SUPP	200	213	219	89	81	90
Cluster residence	Year 11	13	5	12	3	1	3	355	356	344	92	96	92
	Year 12	7	SUPP	SUPP	4	SUPP	SUPP	188	207	95	95	95	95
	Year 13	SUPP	6	SUPP	SUPP	3	SUPP	149	142	166	88	79	91
Leeds all	Year 11	646	393	357	8	5	5	6703	7194	6564	80	87	87
	Year 12	132	67	115	3	2	3	3436	3476	3550	90	93	93
	Year 13	121	135	120	5	4	4	2067	2350	2593	78	76	84

Data Source: Integrated Youth Support Service										DP: O	
16-18 NEET and EET Nov 2011 to Jan 2012	NEET		EET		Not Known		Other Activity				
	Number	%	Number	%	Number	%	Number	%			
Cluster	42	3.8	1072	95.9	SUPP	SUPP	SUPP	SUPP			
Wedge	493	7.5	6006	91.5	66	1.0	16	0.2			
Leeds all	1538	7.0	20170	91.7	343	1.6	58	0.3			

**Please Note:** Leeds totals for 16-18 NEET will not match publicised totals as published totals include a proportion of those whose status has expired